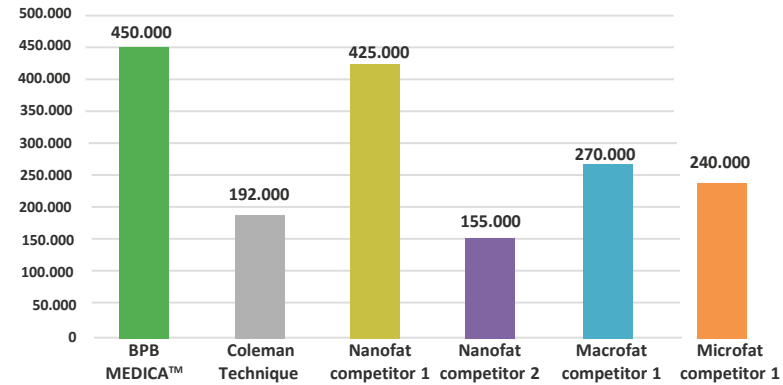
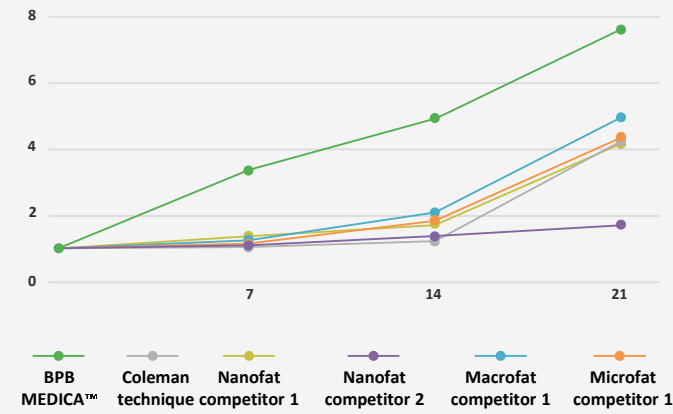


**CELL VIABILITY  
AFTER SAMPLING:**  
Number of MSCs  
per mL of adipose  
tissue



**IN VITRO  
PROLIFERATION:**  
Increase in the number  
of MSCs at 7/14/21 days)



\*Preliminary data – International Public University



SPINE



ORTHOBIOLIGICS



ASSISTED  
REPRODUCTION  
TECHNOLOGY



BIOPSY

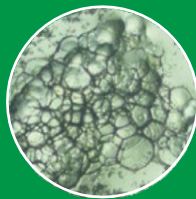


INTENSIVE  
CARE

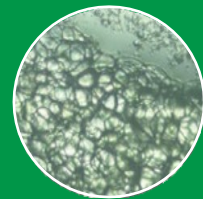


AESTHETIC

**BEAUTY-STEM™**

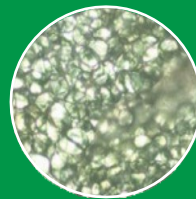


1

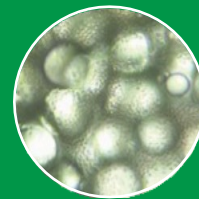


2

**COLEMAN**



3



4

The BEAUTY-STEM™ sample (Figures 1 & 2) exhibits a uniform composition, free from impurities. In contrast, the images of the lipoaspirate obtained using the Coleman technique (Figures 3 and 4) show blurred sections, indicating contamination by red blood cells.

[international1@biosybell.it](mailto:international1@biosybell.it)  
+39 0535 27850  
[biosybell.com](http://biosybell.com)  
Via Aldo Manuzio 24 - 41037  
Mirandola (MO) – Italy

Rev. 01 – 24/06/2024



**BEAUTY-STEM™**  
**BEAUTY-STEM DUO™**  
Regenerative lipofilling for  
aesthetic and reconstructive surgery

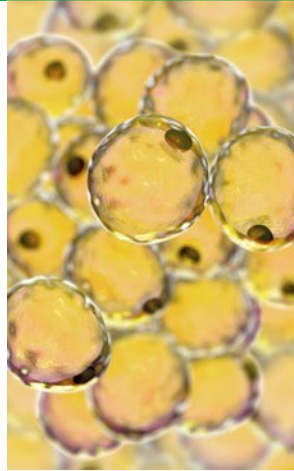


AESTHETIC

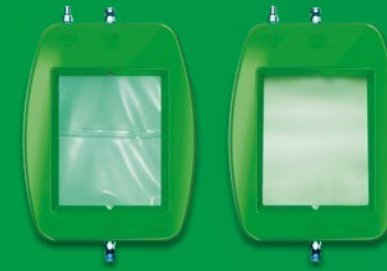
BEAUTY-STEM™ and BEAUTY-STEM DUO™ are devices designed to obtain **adipose tissue with extraordinary regenerative capacity and optimal engraftment.**

Utilizing state-of-the-art technology, they enable rapid purification of adipose tissue without the use of centrifuges, ensuring **maximum safety** through a single-use, closed-loop system.

Specifically designed for reconstructive and aesthetic surgery, these devices are ideal for both **volumization** and **localized rejuvenation** treatments.



## Why choose the BEAUTY-STEM™ and BEAUTY-STEM DUO™ method



## BEAUTY-STEM™/BEAUTY-STEM DUO™ HOW DO THEY WORK?

The technology used by BEAUTY-STEM™ and BEAUTY-STEM DUO™ enables the complete processing, purification and micro-fragmentation of tissue through a **gentle yet constant washing** with saline solution.

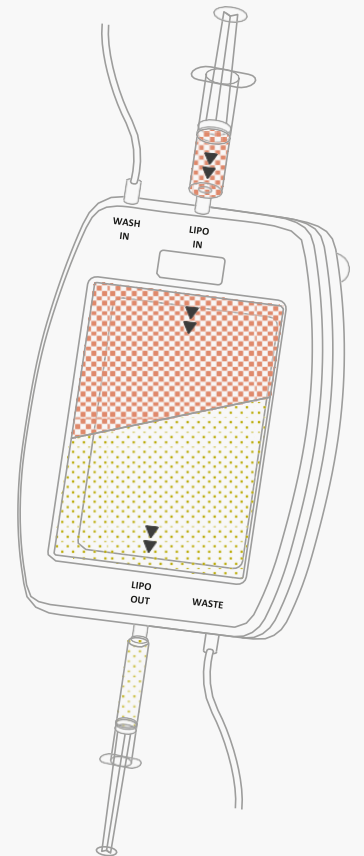


This process, free of traumatic agents and stress factors, keeps the proliferative, trophic, and anti-inflammatory functions of the adipose tissue intact, optimizing its regenerative capacity.

Additionally, the **filtration system** preserves the entire architecture of the stromal vascular niche, ensuring that the final product is autologous tissue that retains and enhances the original biological properties.

The **BEAUTY-STEM DUO™** device, in particular, is equipped with an additional filter designed to **further reduce and microfragment adipose clusters**, enhancing tissue vitality and exosome release, thus improving its ability to respond to regenerative stimuli.

Its technology is especially suitable for specific procedures and the resulting lipoaspirate can be easily injected through very thin needles.



### □ FACE

Restoration of **volume** and **rejuvenation** of the face.

### □ INJURIES, BURNS AND SCARS

Optimization of the natural recovery of **injured, burned or scarred tissues.**

### □ GENITAL AREA

Therapy or refinement of **male and female genitalia.**

### □ BODY

Reconstitution or integration of the **volume of breasts and buttocks.**

### Safe

- Disposable, closed-loop device to **eliminate the risk of contamination.**
- The procedure is performed entirely in a **single surgical session** and in a **sterile environment.**
- Preservation of the biological properties of the cells, under conditions of minimal manipulation for a **safe and natural result.**
- **Day hospital treatment** to maximise patient safety and comfort.

### Fast

- **Rapid processing:** up to 400 ml of adipose tissue treated in just a few minutes.
- **Elimination of downtime:** no waiting for centrifugation or cleaning.
- **All-in-one solution:** a single device that purifies, microfragments and returns a ready-to-use lipoaspirate.

### Easy

- **Reduction of necessary staff:** the device can be operated by the surgeon alone.
- **Simplification of operations:** minimizes the need for training, preparation, handling, and cleaning.
- **Intuitive** procedure.
- **Repeatability:** possibility to perform multiple processing on the same patient during the same procedure with the same kit.

